

Beautifully Renovated Duplex in Graduate Hospital!

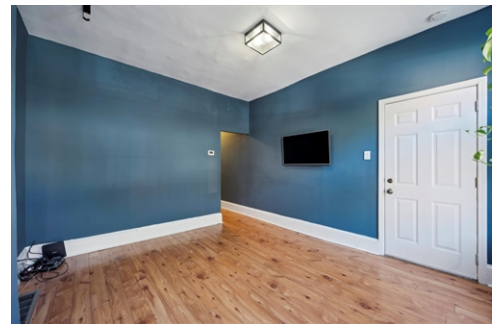


\$ 659,900



2212 Christian St, Philadelphia, PA 19146

- » Beds: 5 | Baths: 2 Full
- » MLS #: PAPH2343936
- » Duplex | Lot: 1,824 ft²
- » Building has newer roofs, water heaters, and HVAC systems, making it move-in ready for an owner-occupant or investor looking for rental income.
- » 1st floor features a two-bedroom, one-bath apartment with hardwood floors, a full unfinished basement with laundry and storage, and a private patio.



Eric Fox
(267) 625-4504 (Eric Cell)
eric@efoxhomes.com
<http://www.efoxhomes.com>



THE ERIC FOX TEAM

Compass
1430 Walnut Street
3rd Floor
Philadelphia, PA 19102
(267) 435-8015

Don't miss this beautifully renovated duplex located in the desirable Graduate Hospital area. The building boasts newer roofs, water heaters, and HVAC systems, along with an on-trend paint scheme that makes it move-in ready for an owner-occupant or savvy investor looking to collect rental income. The first floor features a two-bedroom, one-bath apartment with hardwood floors throughout, exclusive access to a full unfinished basement with laundry and storage plus a private patio. The kitchen has been recently updated with granite countertops, a white lantern tile backsplash, stainless steel appliances, and crisp white cabinetry. There's ample space for a bistro set in the kitchen or a combined living/dining area in the bright and spacious front living room. Both bedrooms fit full or queen sized beds and have closets. They share a full hall bath with a porcelain tile tub surround and a space-saving modern floating vanity. Upstairs, you'll find an equally stylish two-bedroom, one-bath bi-level unit. The large front room boasts two oversized windows, original hardwood floors, and custom shelving. The kitchen, situated at the rear of the second level, features white upper and navy lower cabinetry, granite countertops, stainless steel appliances, and a full-size front loading stackable washer dryer which is conveniently tucked into a closet. The sleeping quarters are on the third floor. The largest bedroom, located at the front, features two large windows and a double wide closet. The second bedroom is spacious as well with

